

Overview of Class Size and Composition in British Columbia Public Schools 2007/08

School District 073 Kamloops/Thompson

These class size data are current as of September 30, 2007 and have been verified by school districts.

PLEASE NOTE

The Ministry makes small and continuous improvements to the quality of its data. Sometimes these changes result in differences from previously published reports. The data in this report are the most accurate data available at time of publication.

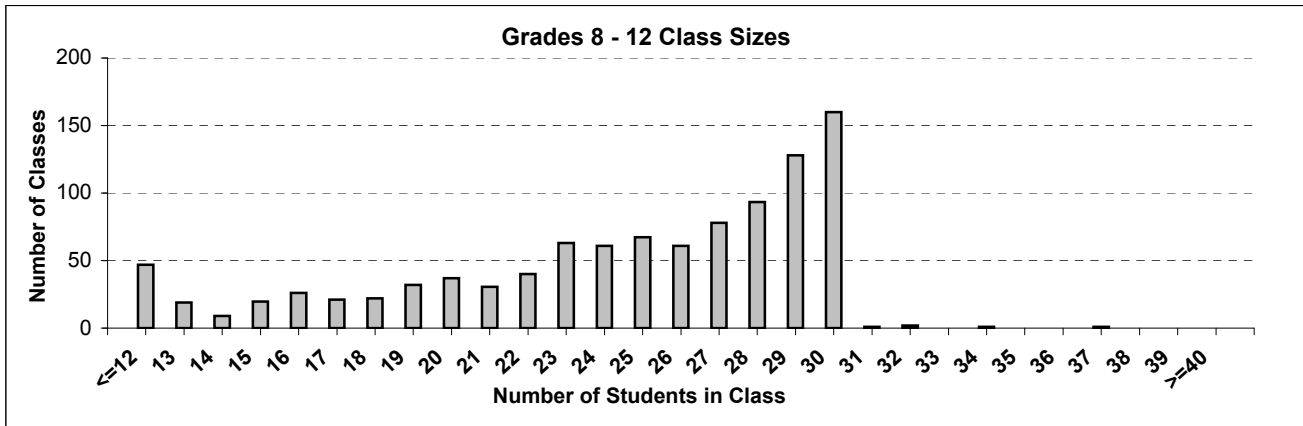
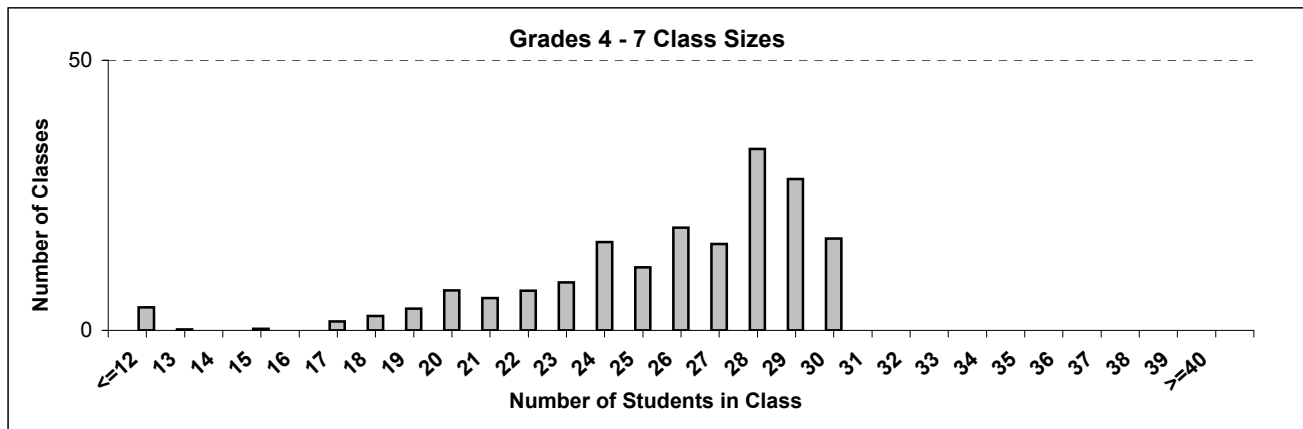
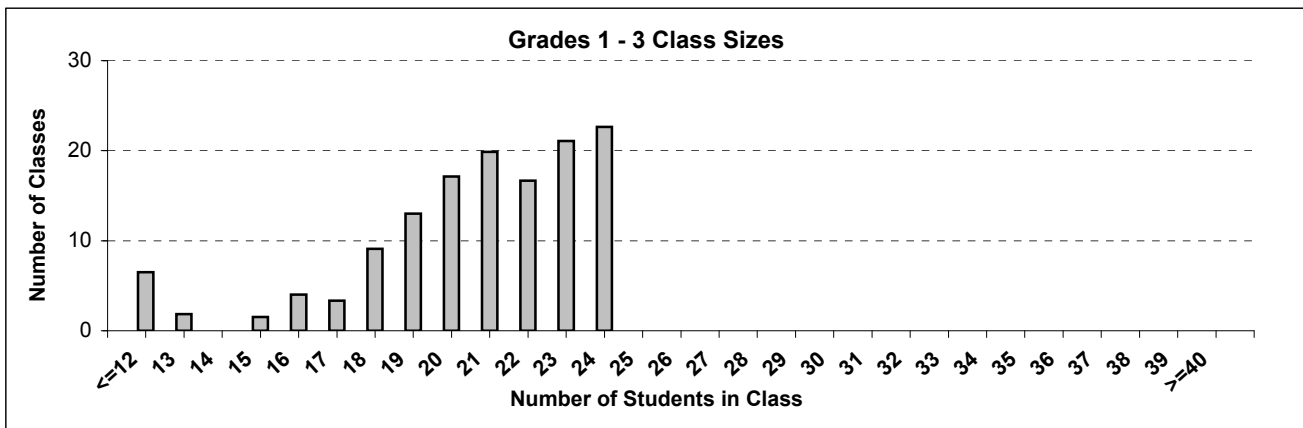
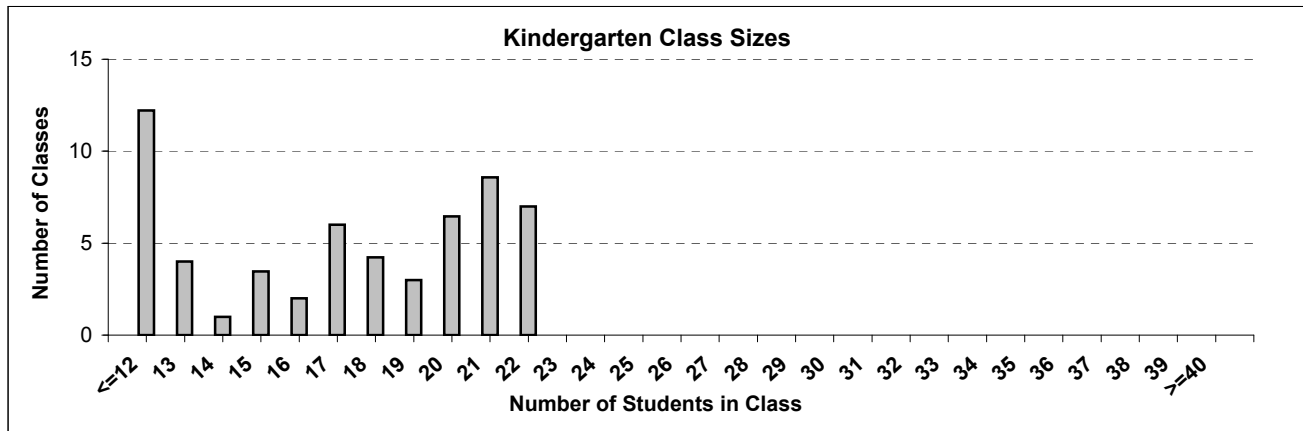
Ministry reports are available at <http://www.bced.gov.bc.ca/reporting/>

Contact the Analysis and Reporting Group, Information Department at educ.reportingunit@gov.bc.ca

District Class Sizes

073 Kamloops/Thompson

Source: Class size data collection (as of September 30) from standard BC public schools.



District - Average Class Size

073 Kamloops/Thompson

Source: Class size data collection (as of September 30) from standard BC public schools.

District - Average Class Size	Kindergarten	Grade 1 - 3	Grade 4 - 7	Grade 8 - 12
	16.0	20.5	25.5	24.2

Province - Average Class Size	Kindergarten	Grade 1 - 3	Grade 4 - 7	Grade 8 - 12
	17.4	20.4	25.8	24.4

Number of Reported Classes with Assigned Education Assistants	520
---	-----

Number of Reported Schools in School District	47
---	----

Number of Reported Classes in School District	1,399
---	-------

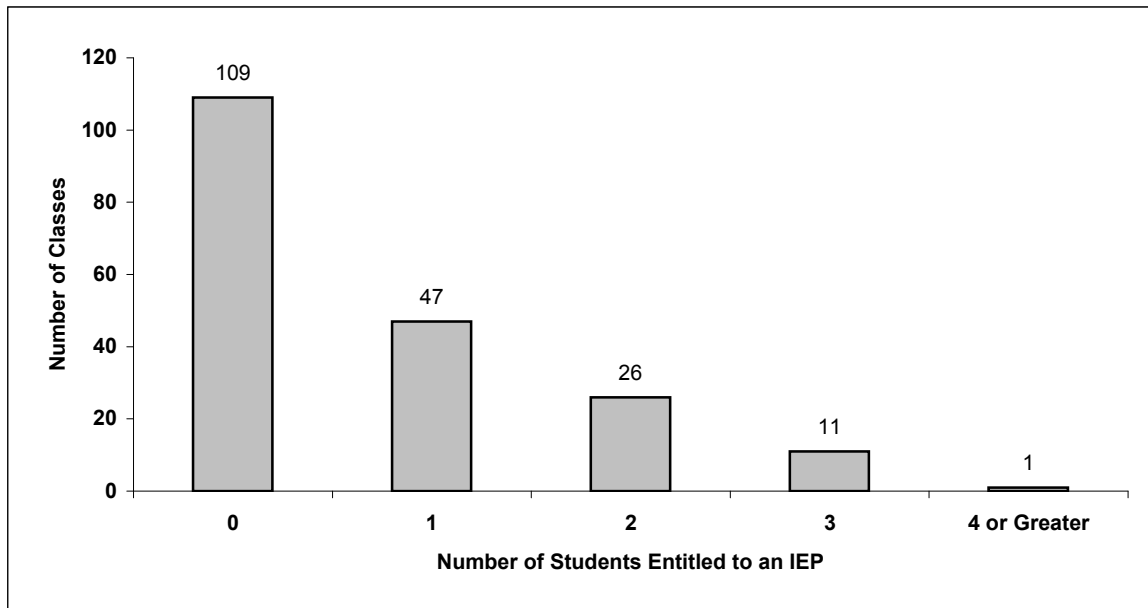
Number of Reported Classes in School District with more than 30 Students	5
--	---

District - Students Entitled to an Individual Education Plan (IEP)

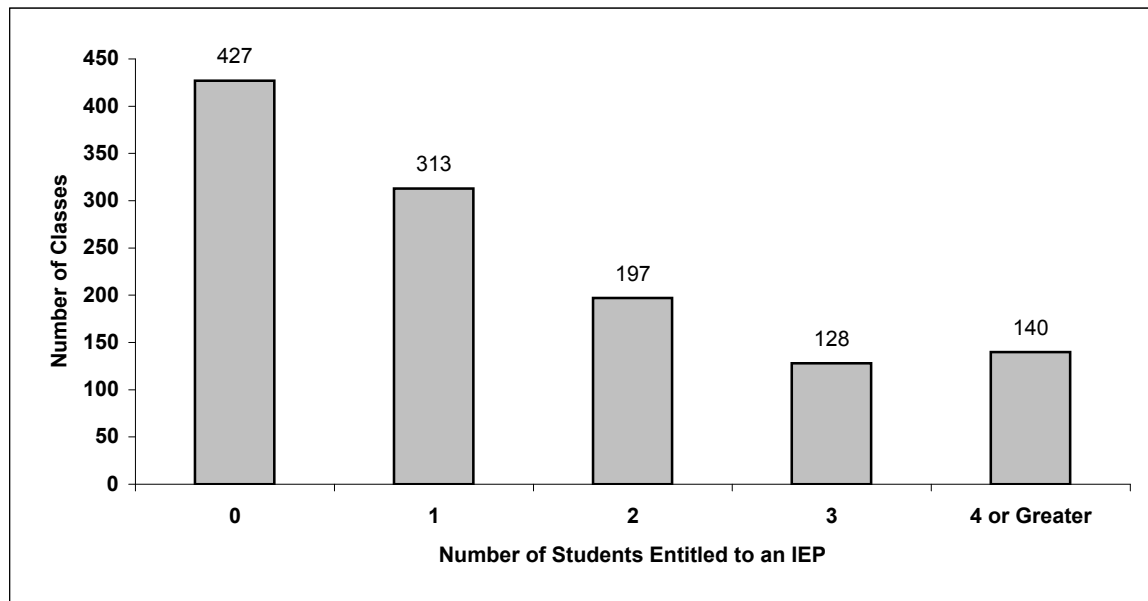
073 Kamloops/Thompson

Source: Class size data collection (as of September 30) from standard BC public schools.

Grades K-3 - Number of Classes in District with 'X' Number of Students Entitled to an IEP



Grades 4-12 - Number of Classes in District with 'X' Number of Students Entitled to an IEP

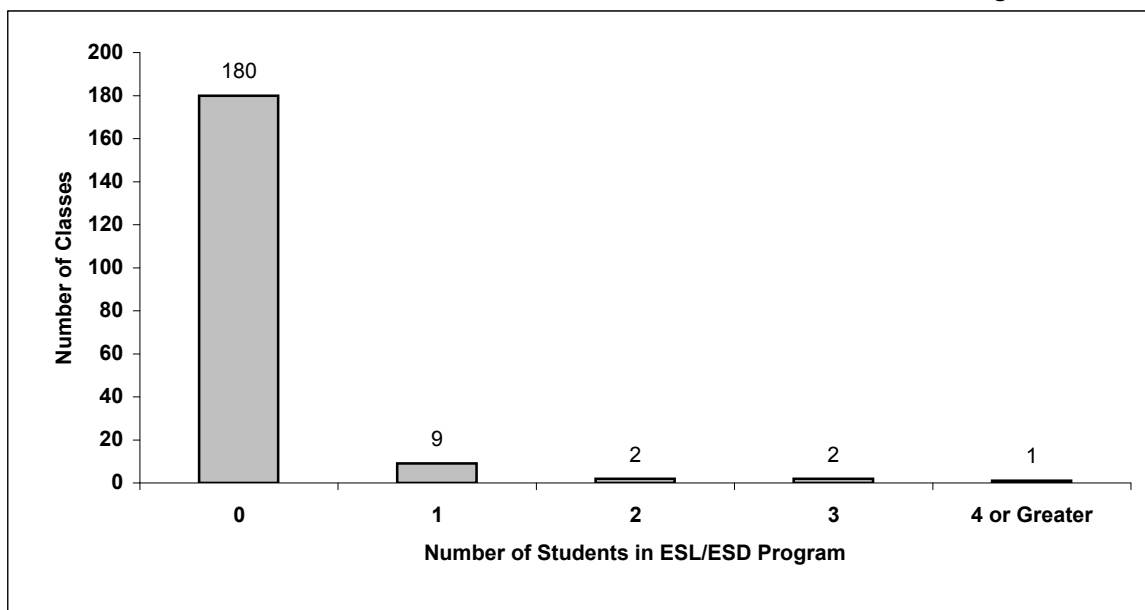


District - Students in English as a Second Language/Dialect (ESL/ESD) Program

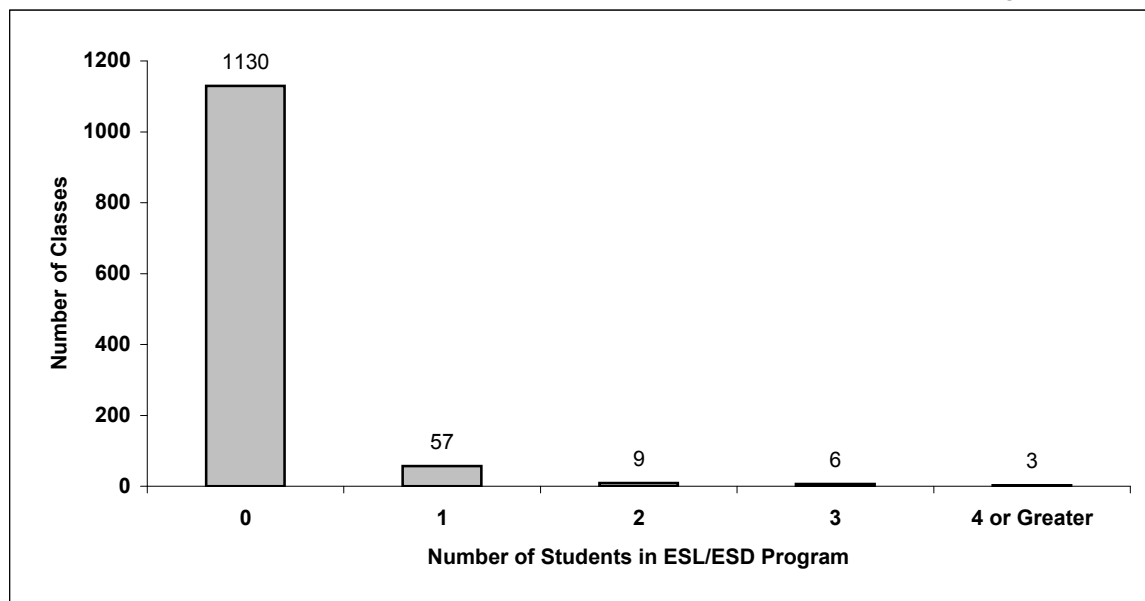
073 Kamloops/Thompson

Source: Class size data collection (as of September 30) from standard BC public schools.

Grades K-3 - Number of Classes in District with 'X' Number of Students in ESL/ESD Program



Grades 4-12 - Number of Classes in District with 'X' Number of Students in ESL/ESD Program



073 Kamloops/Thompson - Average Class Size by School

Source: Class size data collection (as of September 30) from standard BC public schools.

Ministry Code	School Name	Kindergarten	Grade 1 - 3	Grade 4 - 7	Grade 8 - 12
07324039	A E Perry Elementary	21.5	21.0	25.6	-
07324071	Aberdeen Elementary	12.5	20.0	26.8	-
07324036	Arthur Hatton Elementary	14.0	16.1	20.7	-
07324031	Arthur Stevenson Elementary	19.0	22.3	26.7	-
07324052	Barriere Elementary	17.5	23.0	28.0	-
07324048	Barriere Secondary	-	-	-	23.2
07324014	Beattie School of the Arts	11.7	20.0	24.3	19.0
07324032	Bert Edwards Science & Technology	22.0	23.7	29.1	-
07326002	Blue River School	9.0	9.0	9.0	-
07324050	Brennan Creek Elementary	-	10.0	10.0	-
07324043	Brocklehurst Secondary	-	-	-	24.4
07324035	Chase Secondary	-	-	-	21.5
07326005	Clearwater Secondary School	-	-	-	20.5
07324023	Dallas Elementary	20.5	22.9	26.6	-
07324058	David Thompson Elementary	21.5	21.8	26.4	-
07324072	Dufferin Elementary	17.9	23.3	27.8	-
07324028	George Hilliard Elementary	20.5	19.2	22.1	-
07324004	Haldane Elementary	12.0	21.5	28.4	-
07324018	Heffley Creek Elementary	9.0	18.5	23.5	-
07324024	John Tod Elementary	4.7	17.3	25.3	-
07324077	Juniper Ridge Elementary	19.0	23.6	26.7	-
07324040	Kay Bingham Elementary	14.0	16.7	22.2	-
07324005	Lloyd George Elementary	20.3	22.2	26.8	-
07324053	Logan Lake Elementary	17.0	18.5	19.7	-
07324070	Logan Lake Secondary	-	-	-	20.4
07324011	Marion Schilling Elementary	14.0	18.4	22.8	-
07324078	McGowan Park Elementary	16.0	21.5	25.8	-
07324044	Norkam Secondary	-	-	-	24.0
07373079	Pacific Way Elementary	19.5	20.6	29.4	-
07324054	Parkcrest Elementary School	20.5	22.3	27.9	-
07324067	Pinantan Elementary	3.0	12.5	24.3	-
07326012	Raft River Elementary	19.5	21.3	23.3	-
07324033	Ralph Bell Elementary School	21.0	21.9	28.7	-
07324034	Rayleigh Elementary	20.2	22.2	27.4	-
07324056	Robert L Clemitson Elementary	20.8	18.3	28.7	-
07324057	Sa-hali Secondary	-	-	-	23.2
07324010	Savona Elementary	9.0	14.9	25.2	-
07324012	South Kamloops Secondary	-	-	-	25.7
07324064	South Sa-hali Elementary	19.5	21.4	24.7	-
07324002	Stuart Wood Elementary	21.0	19.8	22.2	-
07324068	Summit Elementary	12.0	20.4	28.3	-
07324076	Tranquille Valley Elementary	-	-	2.0	-
07324045	Valleyview Secondary	-	-	-	25.2
07326011	Vavenby Elementary School	15.0	15.8	18.2	-
07324063	Westmount Elementary	13.0	20.2	25.0	-
07324055	Westsyde Secondary	-	-	-	26.1
07324021	Westwold Elementary	9.0	9.0	22.0	-

Glossary

Term	Definition / Notes
English as a Second Language/Dialect (ESL/ESD) Program	<ul style="list-style-type: none"> • A program offered to students whose primary language(s) is/are other than English, and who may require additional services.
Gifted Student	<ul style="list-style-type: none"> • A student who has exceptional gifts or talents and is defined as Category P in the Special Education Performance Reporting Groups.
Grade	<ul style="list-style-type: none"> • The assigned grade of a student on September 30.
KH	<ul style="list-style-type: none"> • Kindergarten half-time
KF	<ul style="list-style-type: none"> • Kindergarten full-time
Number of Students	<ul style="list-style-type: none"> • Student population is calculated by headcount.
Student	<ul style="list-style-type: none"> • A person enrolled in a BC school. Student populations are calculated by headcount. Students include all adult and school-aged persons who are working toward a certificate of graduation.
Student Entitled to an Individual Education Plan	<ul style="list-style-type: none"> • A student for whom an Individual Education Plan (IEP) must be designed under the Individual Education Plan order, Ministerial Order 638/95.